

# CITY OF CANTON

## TRANSPORTATION MASTER PLAN JANUARY 2023



## APPENDIX A IMPLEMENTATION AND CONCEPTS



# APPENDIX A

## IMPLEMENTATION AND CONCEPTS TABLE OF CONTENTS

**TMP-5 MARIETTA ROAD ROUNDABOUT**

---

**TMP-14 MARIETTA ROAD SIDEWALK**

---

**TMP-26 EAST MAIN STREET PEDESTRIAN  
CROSSING**

---

**TMP-30 THE MILL TRAIL**

---

**TMP-33 ETOWAH RIVER PEDESTRIAN BRIDGE**

---

**TMP-74 RIVERSTONE PARKWAY BICYCLE &  
PEDESTRIAN IMPROVEMENTS**

---

**TMP-5  
MARIETTA ROAD  
ROUNDABOUT**

# Hickory Flat Highway Roundabout

## Estimated Project Cost (2022)

\$1,460,343

## Project Description

Install roundabout with driveway for future connection.

## Coordination Partners

- Cherokee County
- GDOT
- Adjacent property owners
- Electric utilities

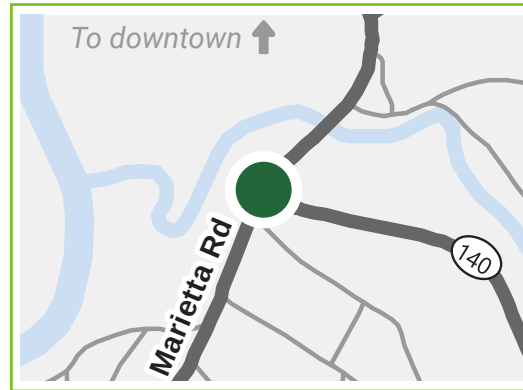
## Next Steps

- Discuss concept and funding with GDOT and ARC to confirm program eligibility
- Add project to Capital Impact Element
- Program the project in the Capital Improvements Program
- Complete the final design

## Location

Marietta Road at Hickory Flat Highway (SR 140)

## Project Map



## Existing Conditions



Image Source: Google Maps. 2022.

## Potential Funding Sources

### Impact Fees

- Would be authorized through a Capital Impact Element (CIE)

### Tax Allocation District

- In city's current TAD

### Livable Centers Initiative Implementation Funding

Source: Atlanta Regional Commission

### Surface Transportation Block Grant

Source: Atlanta Regional Commission

### Highway Safety Improvement Program

Source: Georgia Department of Transportation

### Freight Operations and Rural Development Lump Sum Program

Source: Georgia Department of Transportation

### Local Maintenance and Improvement Grant

Source: Georgia Department of Transportation

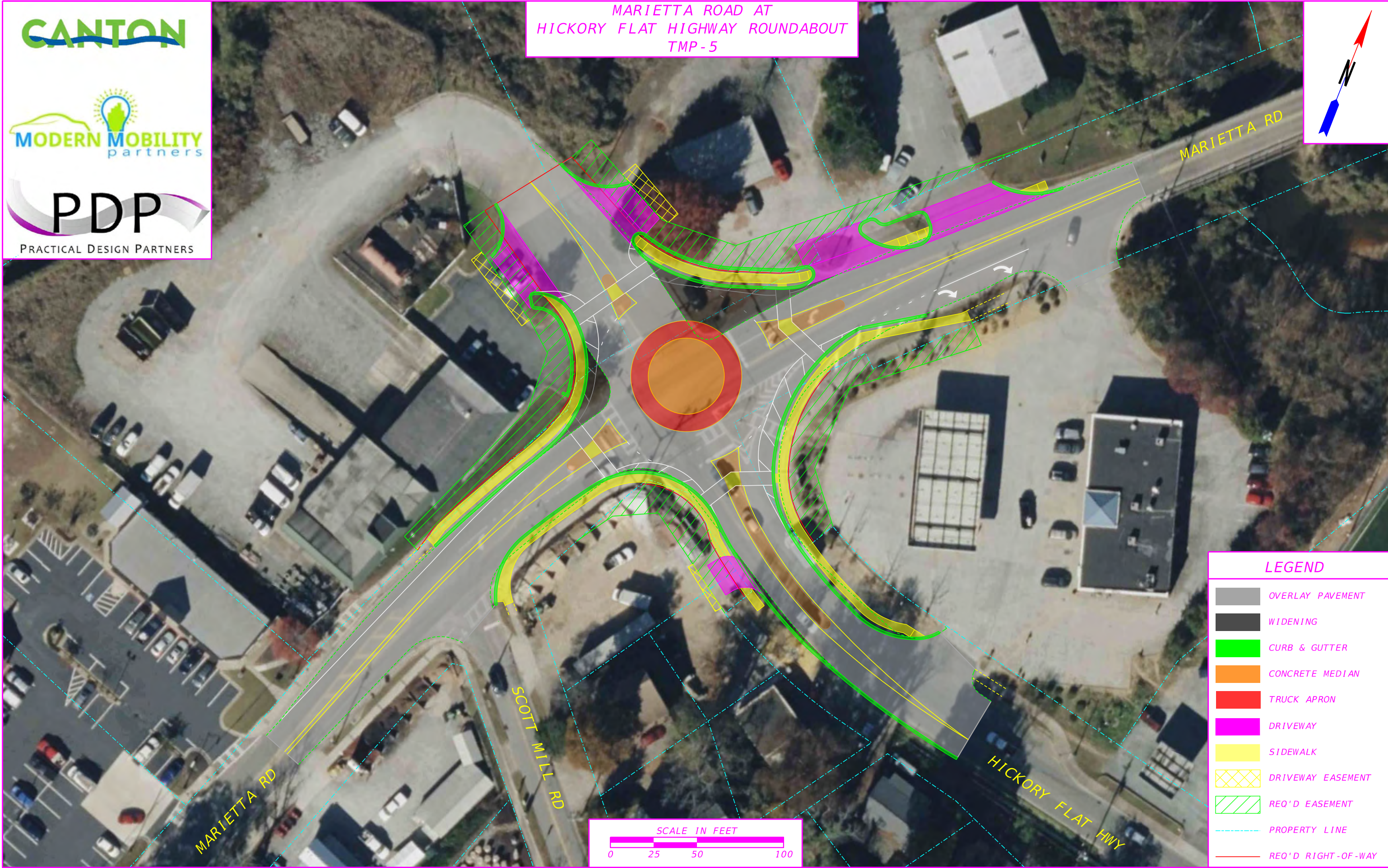
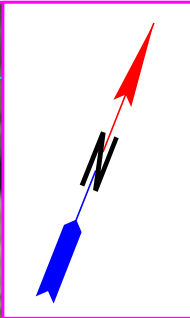


CANTON



PDP  
PRACTICAL DESIGN PARTNERS

MARIETTA ROAD AT  
HICKORY FLAT HIGHWAY ROUNDABOUT  
TMP-5



LEGEND

- OVERLAY PAVEMENT
- WIDENING
- CURB & GUTTER
- CONCRETE MEDIAN
- TRUCK APRON
- DRIVEWAY
- SIDEWALK
- DRIVEWAY EASEMENT
- REQ'D EASEMENT
- PROPERTY LINE
- REQ'D RIGHT-OF-WAY





# **TMP-14 MARIETTA ROAD SIDEWALK**

# TMP 14 Marietta Road Sidewalk

**Estimated Project Cost (2022)**  
\$2,689,588

## Project Description

Pedestrian improvements along the corridor including a pedestrian bridge over Canton Creek.

## Coordination Partners

- Cherokee County
- GDOT
- Adjacent property owners
- Etowah River Alliance
- Georgia Northeastern Railroad
- Patriot Rail

## Next Steps

- Discuss funding eligibility with GDOT and ARC
- Discuss project with rail line property owners, Georgia Northeastern Railroad and Patriot Rail
- Complete design
- Program in Capital Improvements Program
- Identify ROW or easements

**Location**  
Marietta Road between E Marietta Street and Hickory Flat Highway

## Project Map



## Existing Conditions



Image Source: Google Maps. 2022.

## Potential Funding Sources

### Tax Allocation District

- In city's current TAD

### Carbon Reduction Program

Source: Atlanta Regional Commission

### Livable Centers Initiative Implementation Funding

Source: Atlanta Regional Commission

### Transportation Alternatives Program

Source: Atlanta Regional Commission

### Bridge Formula Program

Source: Georgia Department of Transportation

### Local Maintenance and Improvement Grant

Source: Georgia Department of Transportation

### Surface Transportation Block Grant

Source: Atlanta Regional Commission

### Bridge Investment Program

Source: Federal Highway Administration

- Discretionary Grant
- Recommended to be combined with TMP-55 Marietta Street Bridge to increase competitiveness.



CANTON



PDP  
PRACTICAL DESIGN PARTNERS

MARIETTA ROAD SIDEWALK  
TMP 14 & 35



CANTON CREEK

MARIETTA RD

RAILROAD R/W

E MARIETTA ST

INTERSECTION CONVERTED TO 3-WAY STOP

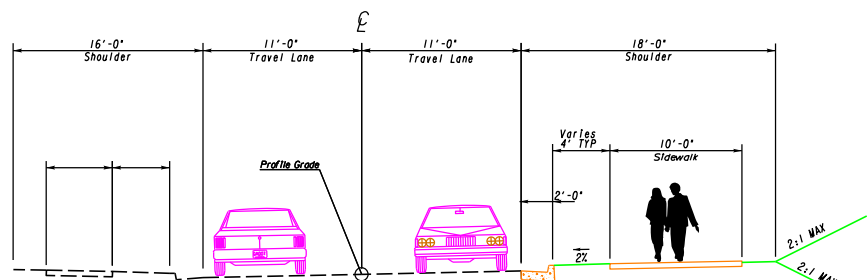
LONGVIEW ST

LONGVIEW DR

RAILROAD CROSSING ARMS TO BE REPLACED

DR JOHN T PETTIT ST

TYPICAL SECTION



LEGEND

- CURB & GUTTER
- SIDEWALK
- DRIVEWAY
- PEDESTRIAN BRIDGE
- DRIVEWAY EASEMENT
- REQ'D EASEMENT
- PROPERTY LINE
- REQ'D RIGHT-OF-WAY



**TMP-26 EAST  
MAIN STREET  
PEDESTRIAN  
CROSSING**

# East Main Street Pedestrian Crossing

## Estimated Project Cost (2022)

\$39,469

## Project Description

Midblock pedestrian crossing with pedestrian flashing beacon.

## Coordination Partners

- Adjacent property owners
- Electric utilities

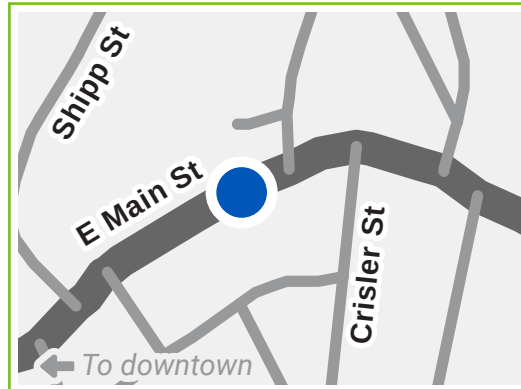
## Next Steps

- Program in Capital Improvements Program
- Acquire materials for crossing
- Install crossing using city staff or procure contractor

## Location

E Main Street, west of N Crisler Street

## Project Map



## Existing Conditions



Image Source: Google Maps. 2022.

## Potential Funding Sources

### General Fund

Source: City of Canton

### Tax Allocation District

- Need City Council approval

### Livable Centers Initiative Implementation Funding

Source: Atlanta Regional Commission

### Surface Transportation Block Grant

Source: Atlanta Regional Commission

### Transportation Alternatives Program

Source: Atlanta Regional Commission

### Local Maintenance and Improvement Grant

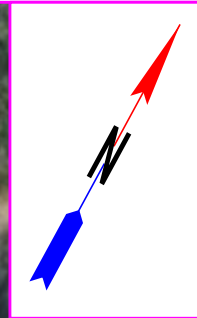
Source: Georgia Department of Transportation



CANTON



EAST MAIN STREET  
PEDESTRIAN CROSSING  
TMP-26



E MAIN ST

N CRISLER ST

RECTANGULAR RAPID  
FLASHING BEACON

RECTANGULAR RAPID  
FLASHING BEACON



**LEGEND**

-  SIDEWALK
-  PROPERTY LINE



# TMP-30 THE MILL TRAIL



# TMP 30 The Mill Trail

**Estimated Project Cost (2022)**  
\$1,968,645

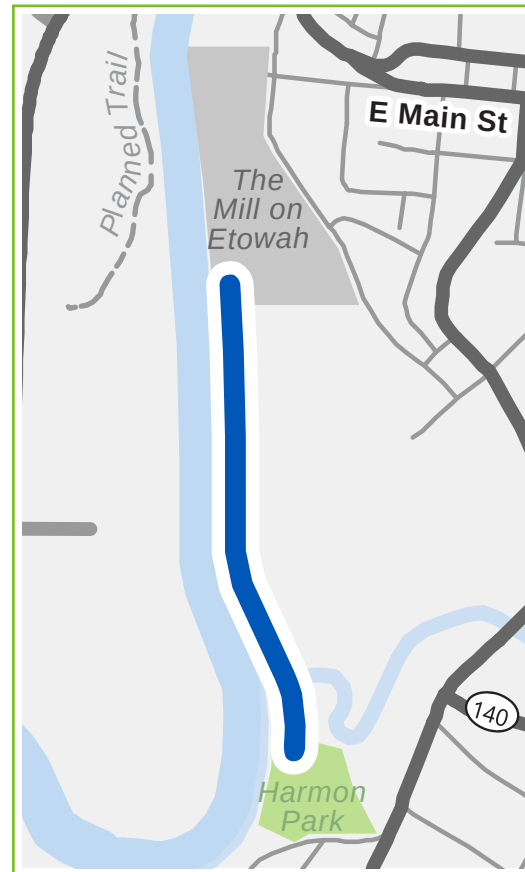
**Project Description**  
Off-road trail connecting the Mill on Etowah to Harmon Park/Ballfield

- Coordination Partners**
- The Mill on Etowah
  - Parks and Recreation Department
  - Etowah River Alliance

- Next Steps**
- Complete design including river crossing
  - Explore funding with City Council and ARC
  - Program in Capital Improvements Program
  - Identify match funding if applying for grants

**Location**  
Off-street between the Mill on Etowah and Harmon Park

## Project Map



## Potential Funding Sources

### Tax Allocation District

- In city's current TAD

### Livable Centers Initiative Implementation Funding

Source: Atlanta Regional Commission

### Surface Transportation Block Grant

Source: Atlanta Regional Commission

### Transportation Alternatives Program

Source: Atlanta Regional Commission

### Rebuilding American Infrastructure Sustainably and Equitably (RAISE)

Source: Federal Highway Administration

- Discretionary Grant
- Eligible for 100% Federal share
- Recommended to be combined with TMP-33 Etowah River Pedestrian Bridge to meet minimum award amounts (\$5 million)



CANTON

MODERN MOBILITY  
partners

PDP  
PRACTICAL DESIGN PARTNERS

THE MILL TRAIL  
TMP-30



ETOWAH RIVER

CANTON MILL VENTURES LLC

CARONELL LLC






12' WIDE TRAIL

HARMON PARK

CANTON CREEK

MARIETTA ROAD

LEGEND

-  PEDESTRIAN BRIDGE
-  MULTI-USE TRAIL
-  REQ'D RIGHT-OF-WAY
-  PROPERTY LINE
-  WOVEN WIRE FENCE

SCALE IN FEET





**TMP-33 ETOWAH  
RIVER PEDESTRIAN  
BRIDGE**

TMP  
33

# Etowah River Pedestrian Bridge

## Estimated Project Cost (2022)

**33A:** \$3,233,984

**33B:** \$3,872,806

## Project Description

Construct a bridge to connect planned TMP trails east of the river to the Etowah Trail network on the west side of the River. Two alternatives: **33A** and **33B**.

## Coordination Partners

- The Mill on Etowah
- Parks and Recreation Dept.
- Etowah River Alliance

## Next Steps

- Complete design including river crossing
- Explore funding options with City Council and ARC
- Program the project in the Capital Improvements Program
- Identify match funding if applying for grants

## Location

Crossing Etowah River, either at the Mill on Etowah (**33A**) or between the Mill and Canton Creek (**33B**)

## Project Map



## Potential Funding Sources

### Livable Centers Initiative Implementation Funding

Source: Atlanta Regional Commission

### Surface Transportation Block Grant

Source: Atlanta Regional Commission

### Transportation Alternatives Program

Source: Atlanta Regional Commission

### Rebuilding American Infrastructure Sustainably and Equitably (RAISE)

Source: Federal Highway Administration

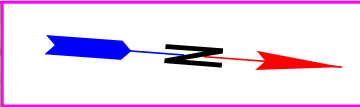
- Discretionary Grant
- Eligible for 100% Federal share
- Recommended to be combined with TMP-30 The Mill Trail to meet minimum award amounts (\$5 million)



CANTON



ETOWAH RIVER PEDESTRIAN BRIDGE AT THE MILL TMP-33A



COMCAST OF GEORGIA INC

EDGEWATER HALL ENTERPRISES LLC

12' WIDE TRAIL  
14' WIDE BRIDGE

25' STREAM BUFFER

5% MAX SLOPE

ETOWAH TRAIL SYSTEM BY OTHERS

ETOWAH RIVER

5% MAX SLOPE

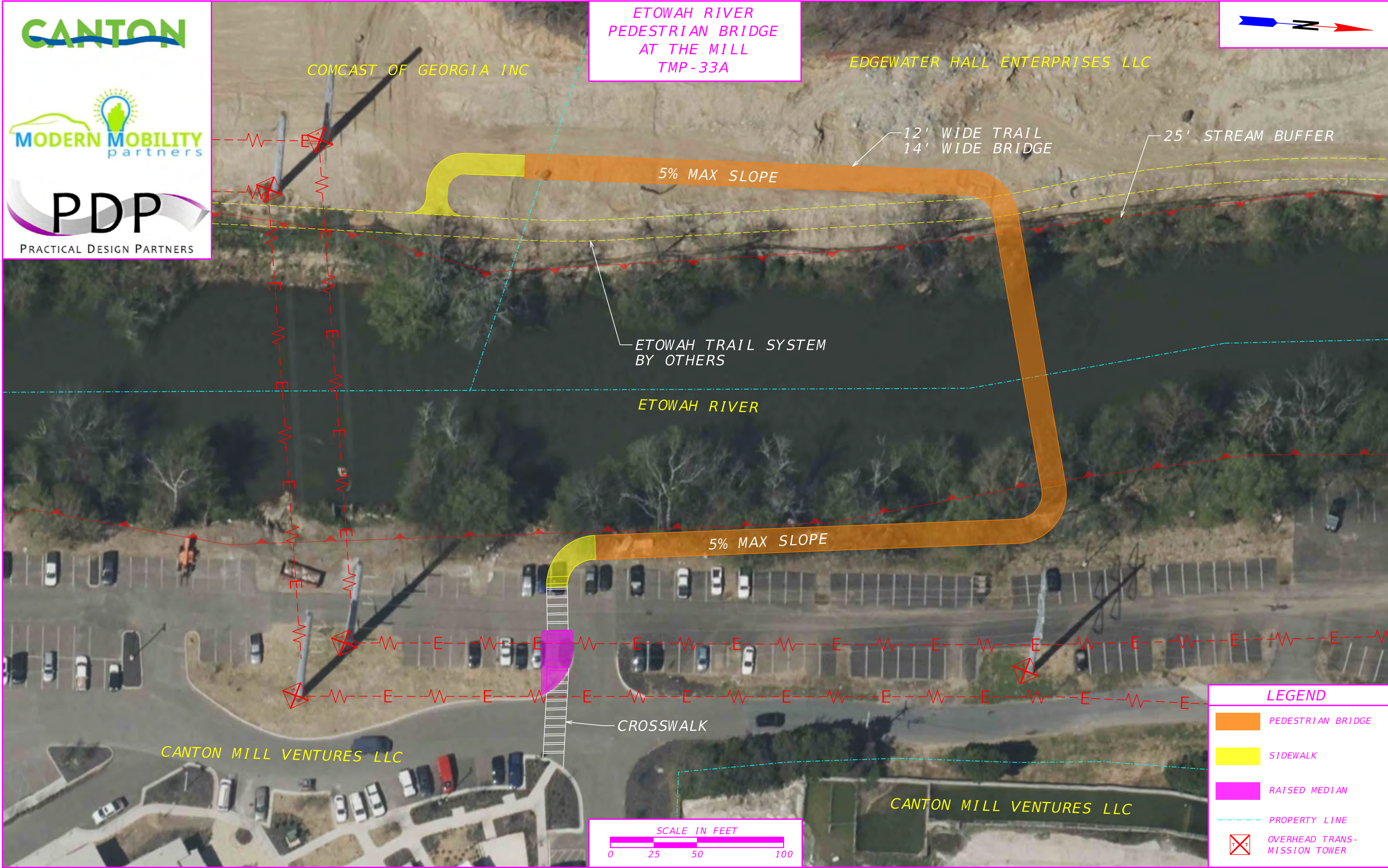
CROSSWALK

CANTON MILL VENTURES LLC

CANTON MILL VENTURES LLC



LEGEND	
	PEDESTRIAN BRIDGE
	SIDEWALK
	RAISED MEDIAN
	PROPERTY LINE
	OVERHEAD TRANSMISSION TOWER

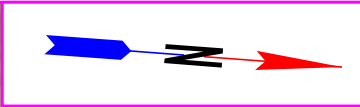




CANTON



ETOWAH RIVER  
PEDESTRIAN BRIDGE  
SOUTH OF THE MILL  
TMP-33B



CHEROKEE COUNTY

CITY OF CANTON

ETOWAH TRAIL SYSTEM  
BY OTHERS

5% MAX SLOPE

12' WIDE TRAIL  
14' WIDE BRIDGE

25' STREAM BUFFER

ETOWAH RIVER

5% MAX SLOPE

TMP 30 - THE MILL TRAIL  
BY OTHERS

CARONELL LLC

LEGEND

- PEDESTRIAN BRIDGE
- SIDEWALK
- REQ'D EASEMENT
- REQ'D RIGHT-OF-WAY
- PROPERTY LINE
- OVERHEAD TRANSMISSION TOWER



**TMP-74  
RIVERSTONE  
PARKWAY BICYCLE  
& PEDESTRIAN  
IMPROVEMENTS**



# Riverstone Parkway Bicycle & Pedestrian Improvements

## Estimated Project Cost (2022)

\$5,514,549

## Project Description

Bicycle/pedestrian infrastructure improvements and connection to Heritage Park and Etowah River Trail.

## Coordination Partners

- Cherokee County
- GDOT
- Adjacent property owners

## Next Steps

- Discuss funding options with Cherokee County, ARC, GDOT
- Complete design
- Identify ROW and easements
- Program in Capital Improvements Program

## Location

Riverstone Parkway between Hospital Drive and Riverstone Boulevard

## Project Map



## Existing Conditions



Image Source: Google Maps. 2022.

## Potential Funding Sources

### Special Service Districts

- Need City Council approval
- Local match funding source

### Tax Allocation District

- Need City Council approval

### Cherokee County SPLOST

### Livable Centers Initiative Implementation Funding

Source: Atlanta Regional Commission

### Transportation Alternatives Program

Source: Atlanta Regional Commission

### Surface Transportation Block Grant

Source: Atlanta Regional Commission

### Highway Safety Improvement Program

Source: Georgia Department of Transportation

### Rebuilding American Infrastructure Sustainably and Equitably (RAISE)

Source: Federal Highway Administration

- Discretionary Grant
- Eligible for 100% Federal share

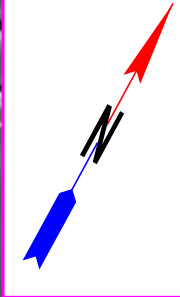


CANTON



PDP  
PRACTICAL DESIGN PARTNERS

RIVERSTONE PARKWAY  
BIKE & PEDESTRIAN IMPROVEMENTS  
TMP-74, SHEET 1 OF 4



SHEET 2

HOSPITAL DRIVE

LAKEVIEW DRIVE

JUNIPER STREET

RIVERSTONE PARKWAY

COTTON MILL DRIVE

PEDESTRIAN CROSSING  
WITH HAWK SIGNAL

TIE TO EXISTING  
ETOWAH RIVER TRAIL



LEGEND	
	SIDEWALK
	RETAINING WALL
	DRIVEWAY
	DRIVEWAY EASEMENT
	REQ'D EASEMENT
	REQ'D RIGHT-OF-WAY
	PROPERTY LINE



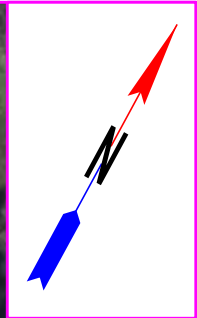
CANTON



PDP

PRACTICAL DESIGN PARTNERS

RIVERSTONE PARKWAY  
BIKE & PEDESTRIAN IMPROVEMENTS  
TMP-74, SHEET 2 OF 4



SHEET 1

SHEET 3

RIVERSTONE DRIVE

RIVERSTONE PARKWAY

OLD BALL GROUND HIGHWAY



LEGEND

- SIDWALK
- RETAINING WALL
- DRIVEWAY
- DRIVEWAY EASEMENT
- REQ'D EASEMENT
- REQ'D RIGHT-OF-WAY
- PROPERTY LINE



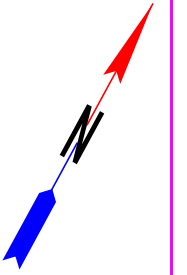
CANTON



PDP

PRACTICAL DESIGN PARTNERS

RIVERSTONE PARKWAY  
BIKE & PEDESTRIAN IMPROVEMENTS  
TMP-74, SHEET 3 OF 4



SHEET 2

TIFFANY LANE

SHEET 4

PROVIDE CONNECTION TO  
FUTURE BIKE/PED IMPROVEMENTS  
ALONG REINHARDT COLLEGE PKWY

RIVERSTONE PARKWAY

OLD BALL GROUND HIGHWAY



LEGEND	
	SIDEWALK
	RETAINING WALL
	DRIVEWAY
	DRIVEWAY EASEMENT
	REQ'D EASEMENT
	REQ'D RIGHT-OF-WAY
	PROPERTY LINE

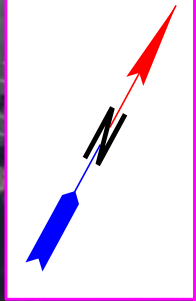


CANTON



PDP  
PRACTICAL DESIGN PARTNERS

RIVERSTONE PARKWAY  
BIKE & PEDESTRIAN IMPROVEMENTS  
TMP-74, SHEET 4 OF 4



SHEET 3

PROVIDE CONNECTION TO  
FUTURE BIKE/PED IMPROVEMENTS  
ALONG RIVERSTONE BLVD

RIVERSTONE PARKWAY

RIVERSTONE BOULEVARD

OLD BALL GROUND HIGHWAY

LEGEND

- SIDEWALK
- RETAINING WALL
- DRIVEWAY
- DRIVEWAY EASEMENT
- REQ'D EASEMENT
- REQ'D RIGHT-OF-WAY
- PROPERTY LINE

SCALE IN FEET

